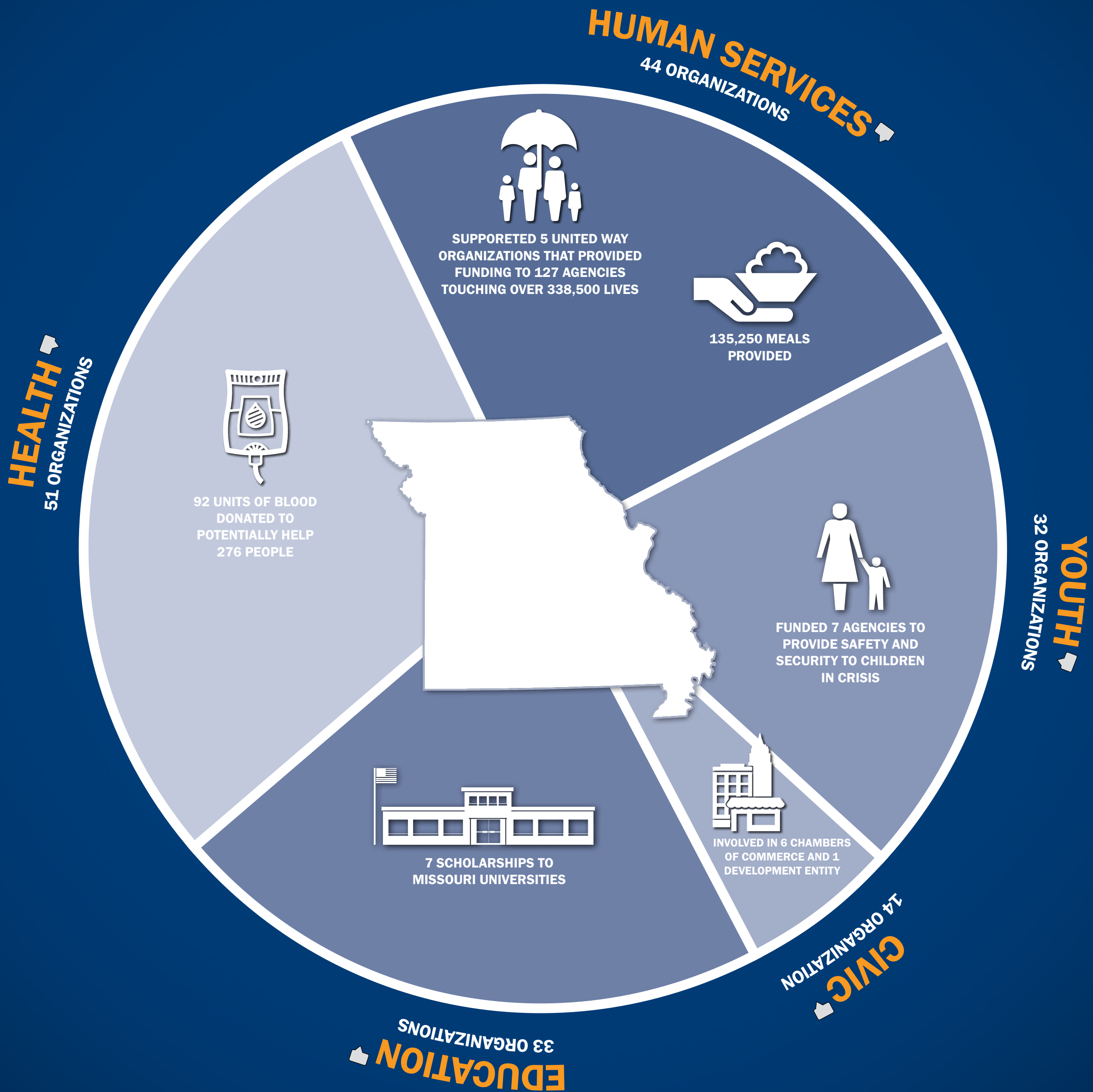


GIVING BACK AND
MAKING LIVES BETTER

2015

Missouri Employers Mutual Insurance takes pride in "Taking Care of Folks" –not only those injured at work, but the people with whom we share our communities.



44 AGENCIES SUPPORTED WITH MATCHING DONATIONS



123 EMPLOYEES



1600 HOURS



174 ORGANIZATIONS



\$51,127 DONATED

